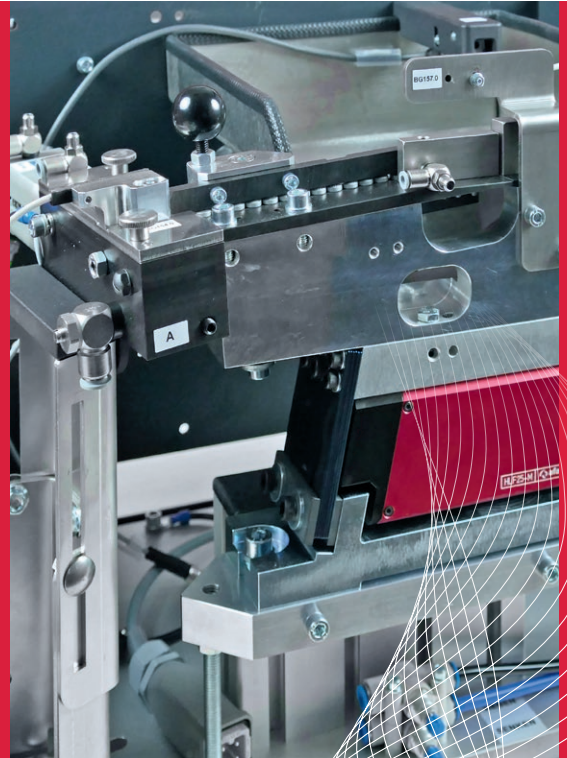


# STF series

Step feeder for  
a gentle feeding process

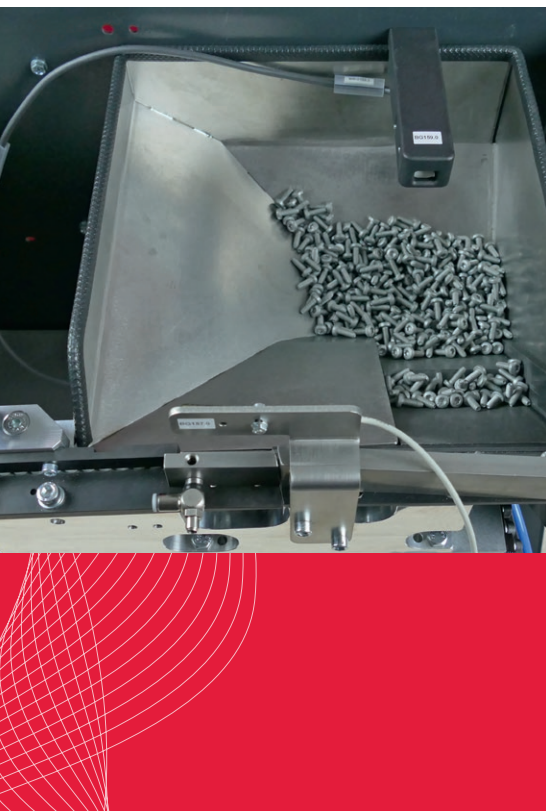


With a step feeder, you are opting for a technically sophisticated device that processes not only screws, but also pins, nuts and much more besides. The feed unit operates in accordance with a proven feeding principle: The fasteners are filled in a funnel-shaped container. Slides transport the fasteners onto a sorting section at the top edge of the container. The correctly positioned and sorted fasteners are transferred to the feed tube via an escapement. The system handles the screws gently, because vibration only arises on the sorting section and the slides only work if the sensor on the linear section signals a requirement for screws. All parts that come into contact with the fastener are designed for a long service life and produced from hardened tool steel. The feed unit can be optionally expanded to include various sensors and accessory parts.



## THE ADVANTAGES AT A GLANCE:

- + Gentle handling of screws
- + Suitable for the majority of fasteners
- + Low noise emissions
- + High output
- + Rapid clearance of non-dimensionally compliant or deformed screws and foreign bodies
- + Can be operated from 100 to 240 V (50 / 60 Hz) without additional settings or modifications
- + Cover of the sorting chicane is simple to remove without tools, e.g. for maintenance purposes
- + Different screw batches can be balanced with the sorting equipment settings
- + UL-approved components according to DIN VDE



## STF 8010

### Technical data

Dimensions [W x D x H]	450 x 420 x 375 mm
Operating pressure range	Approx. 6 bar (oil-free air)
Total weight	35 kg
Output	< 60 fasteners/min
Capacity	1.0 l (+ hopper optional)
Screws	M3 - M6 Length of screw shaft max. 40 mm Head diameter 4 - 12 mm
Pins	Diameter 3 - 12 mm Length 3 - 50 mm
Nuts	M3 - M8
Maintenance interval	Every 3,000,000 cycles or after one year at the latest
Variants	<ul style="list-style-type: none"> <li>• Complete system with escapement and sequence controller</li> <li>• Without sequence controller</li> <li>• ESD version</li> <li>• Additional hopper</li> </ul>

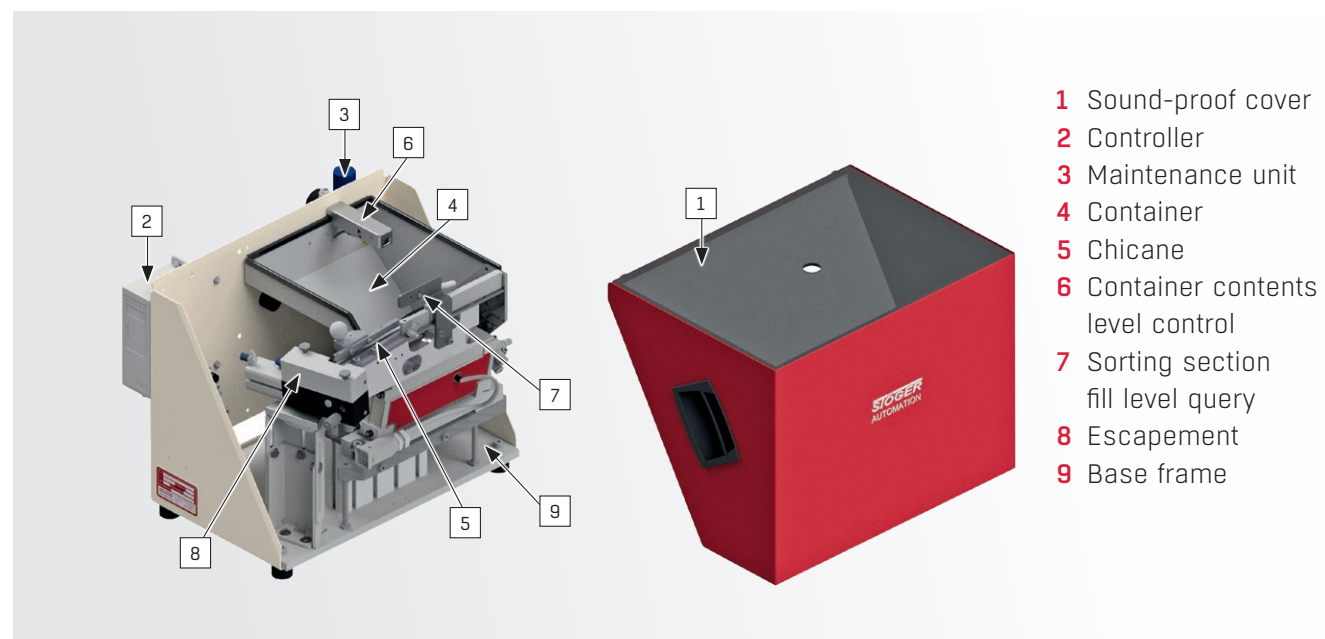
## STF 9020

### Technical data

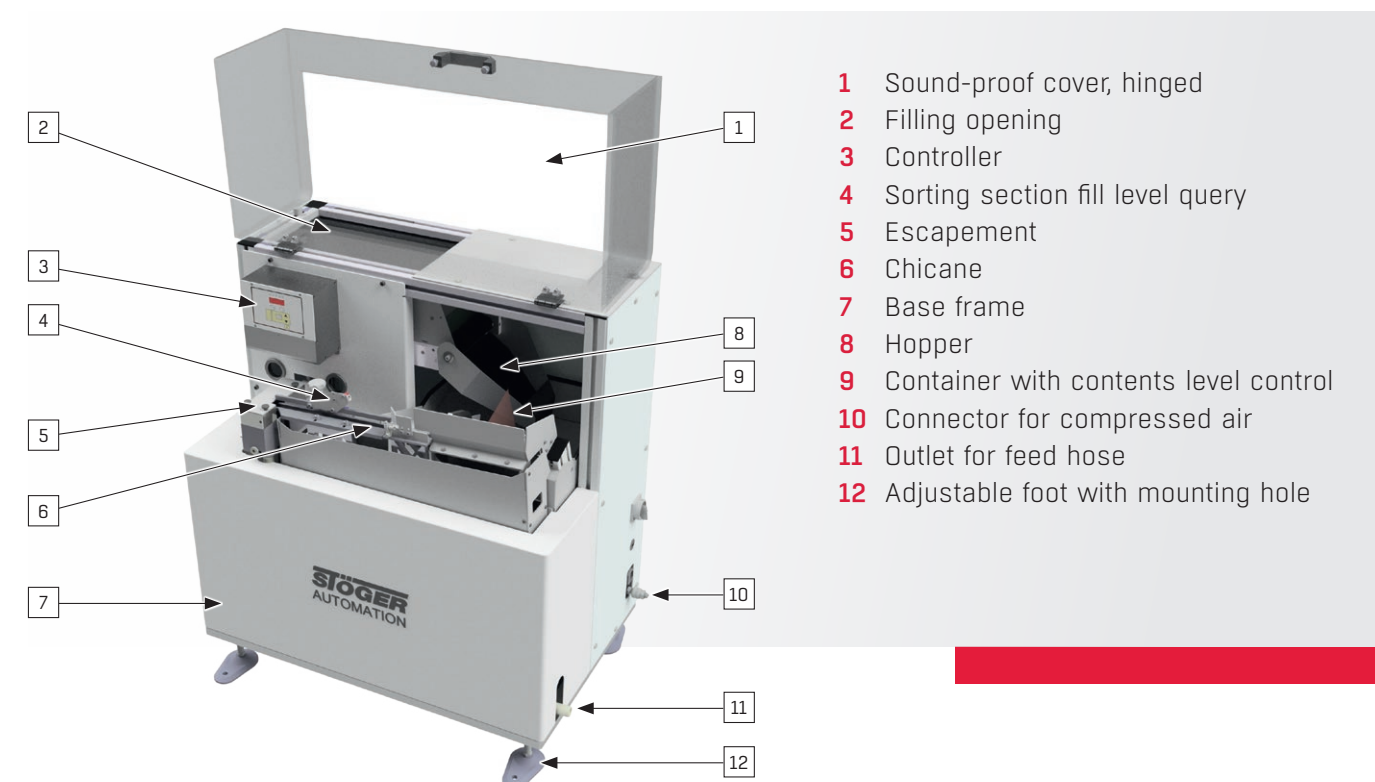
Dimensions [W x D x H]	900 x 560 x 1000 mm
Operating pressure range	Approx. 6 bar (oil-free air)
Total weight	155 kg
Output	< 30 fasteners/min
Capacity	2.0 l + 10 l hopper (Standard; larger volumes optional)
Screws	Up to M10 (Standard) Length max. 100 mm Head diameter up to 24 mm
Pins	Diameter up to 24 mm Length up to 100 mm
Nuts	Up to M16
Maintenance interval	Every 3,000,000 cycles or after one year at the latest
Variants	<ul style="list-style-type: none"> <li>• Complete system with escapement and sequence controller</li> <li>• Without sequence controller</li> <li>• ESD version</li> <li>• Additional hopper</li> </ul>



### Modules

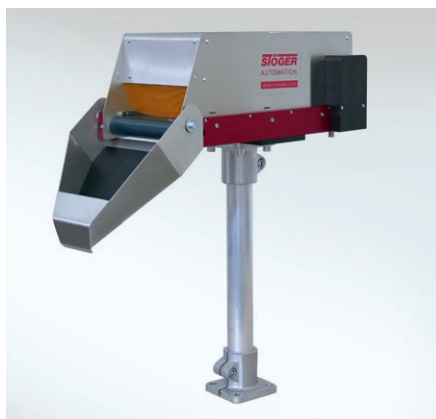


### Modules



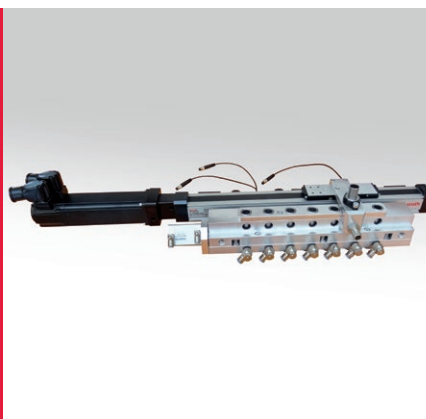


## Accessories



### Hopper

- Fill volumes from 3 - 50 litres
- Increase in autonomy time
- Gentle handling of the fasteners



### Escapement / distributor

- Either supplies multiple screwdriving units in parallel or one spindle with different fasteners
- Targeted feeding possible



### Optical contents level control

- Controlled refilling of fasteners; low wear and avoidance of particles forming due to reduced movement

CAD data and further information available on  
<https://www.stoeger.com/en/step-feeder.html>

STÖGER AUTOMATION GmbH  
 Gewerbering am Brand 1  
 82549 Königsdorf

Phone: +49 8179 997 67-0  
[info@stoeger.com](mailto:info@stoeger.com)  
[www.stoeger.com](http://www.stoeger.com)

